



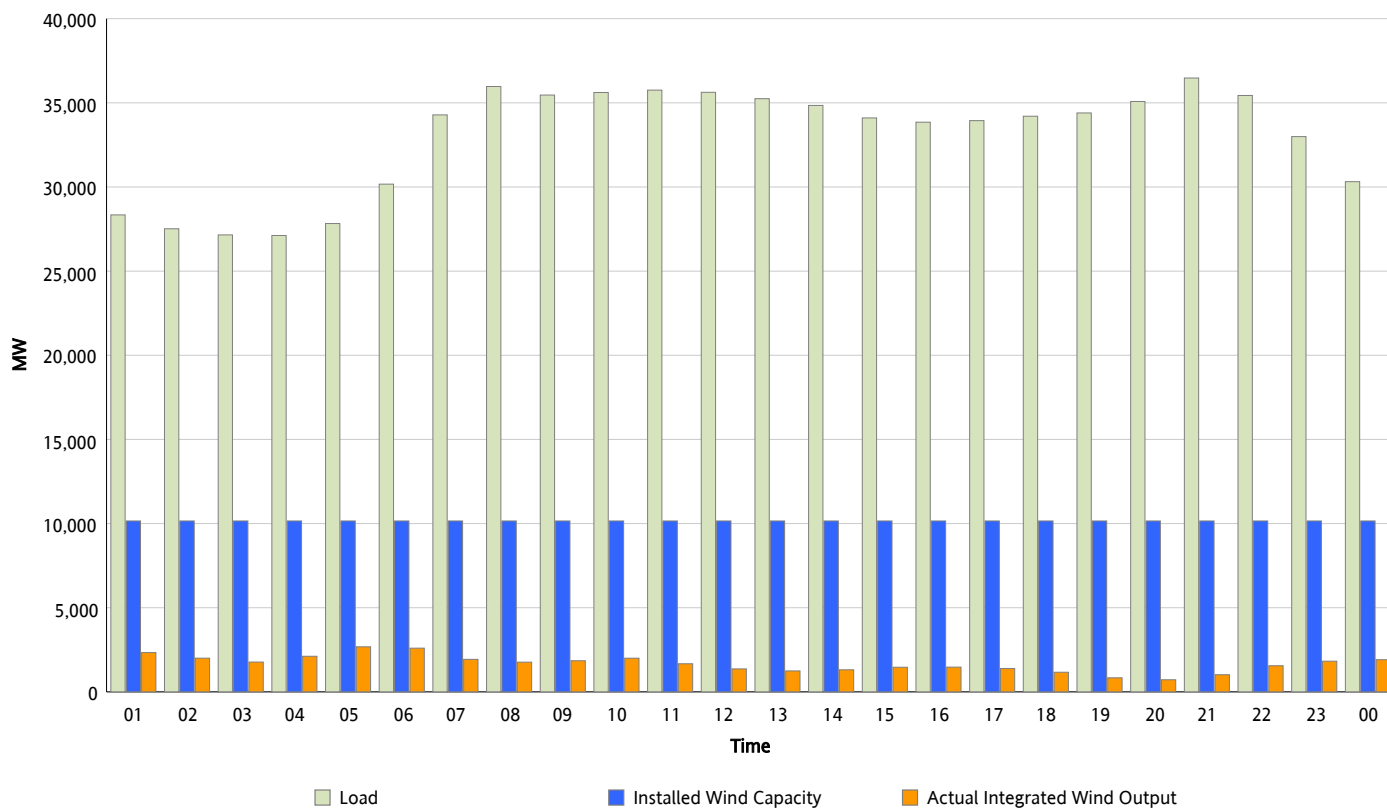
## ERCOT Grid Operations

### Wind Integration Report : 04/04/2013

Peak Load	36,477 MW
Load Peak Hour (HE)	21
Wind Over Peak	1,018 MW
Wind Record 02/09/13	9,481 MW
Max Wind Value*	2,803 MW
Wind Peak Time	04:50
Wind Integration %	9.91 %

#### Hourly Average Actual Load vs. Actual Wind Output

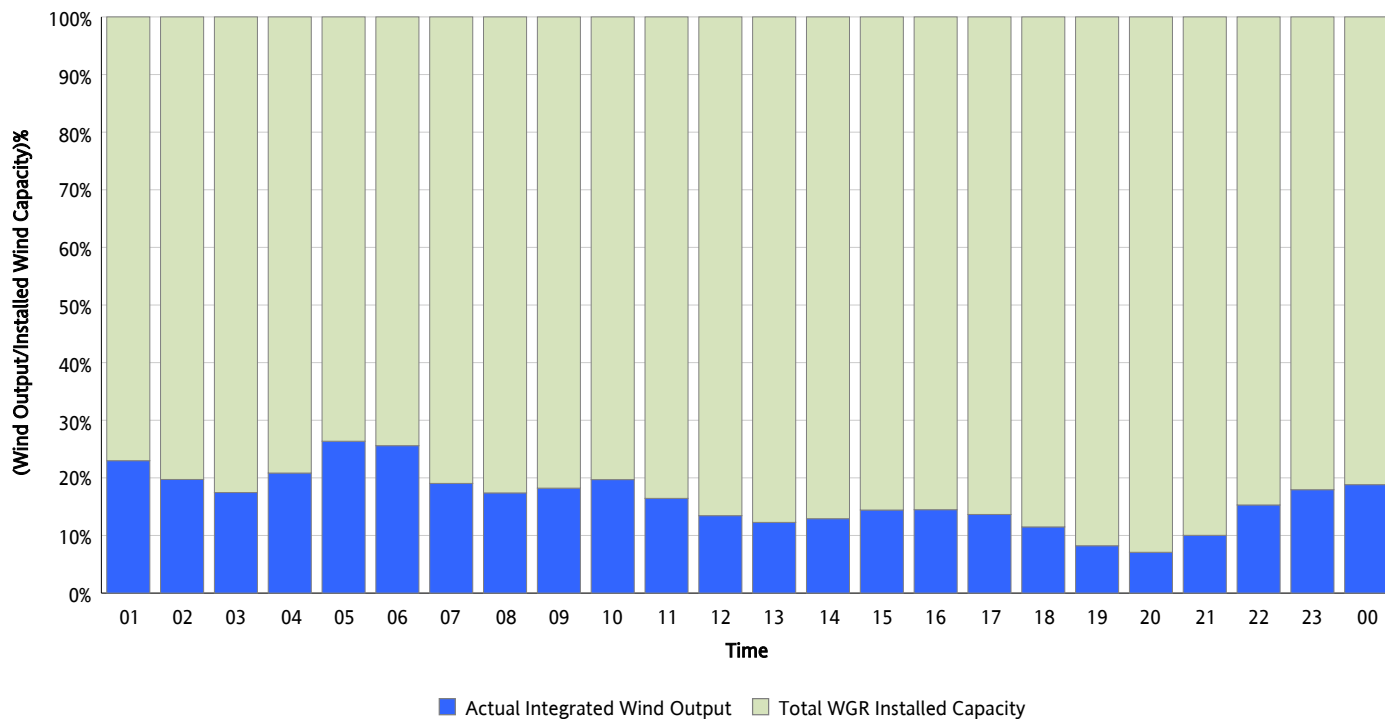
04/04/2013



\* Wind Record and Wind Max represent instantaneous values and the rest of the values are integrated over the hour

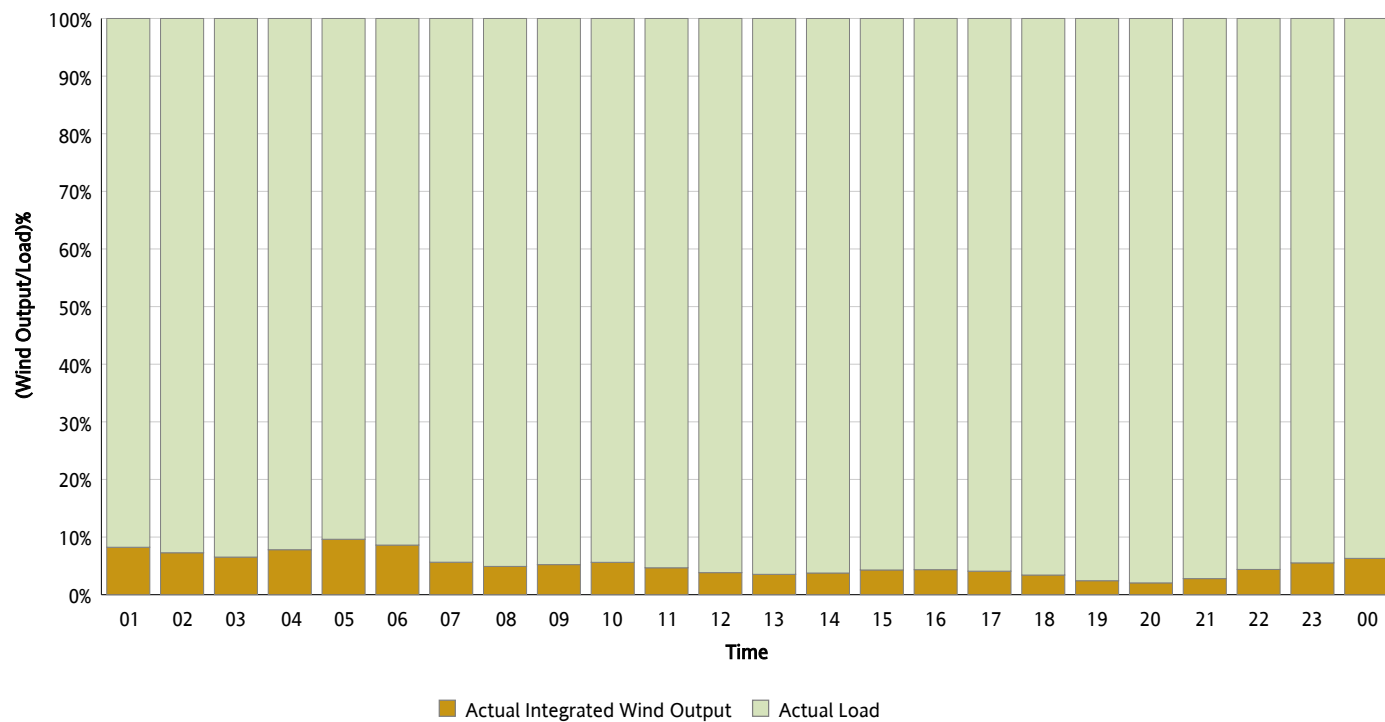
## Actual Wind Output as a Percentage of the Total Installed Wind Capacity

04/04/2013



## Actual Wind Output as a Percentage of the ERCOT Load

04/04/2013



## ERCOT Load vs. Actual Wind Output

03/28/2013 - 04/04/2013

